



# 2025 SHOW MASSACHUSETTS SHOWCASE

**EVENT DATES: NOVEMBER 21-24**

**NEW ENGLAND SPORTS CENTER  
121 DONALD LYNCH BLVD.  
MARLBOROUGH, MA 01752**

**RESERVATION DEADLINE VARIES BY HOTEL**



550 Winter St, Waltham, MA 02451

**Contact: Darlene Kloris** (781) 890-6767

[DKloris@HEHotels.com](mailto:DKloris@HEHotels.com)

[CLICK HERE FOR WEBSITE](#)

## **EMBASSY SUITES - WALTHAM**

*Find our all-suite hotel off I-95, within five miles of the Brandeis and Bentley University campuses. Convenient interstate access puts Downtown Boston sights 18 miles away. Enjoy our heated indoor pool, free made-to-order breakfast, and complimentary Evening Reception.*

**BREAKFAST INCLUDED IN RATE**

**RESERVATION DEADLINE - 11/5/25**

**RATE:**

**\$159.00**  
Double Queens

**22 miles**

**\*NAHL HOST HOTEL\***



59 Andrews Pkwy, Devens, MA 01434

**Contact: TongYa Smith** (978) 757-3004

[Tongya.Smith@Hilton.com](mailto:Tongya.Smith@Hilton.com)

[CLICK HERE FOR WEBSITE](#)

## **HILTON GARDEN INN - DEVENS**

*Fort Devens US military installation is across the street from our hotel. Many companies are within two miles, including Bristol-Myers Squibb, Johnson Matthey, and SMC. It's less than 12 miles to the Nashoba Valley Ski Area. Enjoy meals in our restaurant, evening room service, and free WiFi. Our fitness center features a Peloton® Bike with toe cages.*

**RESERVATION DEADLINE - 11/5/25**

**RATE:**

**\$169.00**  
Double Queens

**18 miles**

**\*NAHL HOST HOTEL\***



123 Boston Post Road West, Marlborough MA 01752  
**Contact: Patrick Duggan** (508) 263-7754  
[Patrick.Duggan@pyramidglobal.com](mailto:Patrick.Duggan@pyramidglobal.com)  
[CLICK HERE FOR Website](#)

## \*NAHL HOST HOTEL\*

### EMBASSY SUITES MARLBOROUGH

Centrally located between Boston and Worcester, this comfortable all-suite hotel is less than 45 minutes from Logan Airport (BOS) and just off I-495 and Rt. 20. Wake up in a spacious bedroom of a two-room suite and enjoy our complimentary breakfast buffet every morning which includes a fresh made-to-order omelet station and build-your-own waffle bar! Snacks and non-alcoholic beverages are complimentary at the Evening Reception. We also provide a team meal to book during your stay, your team would have the opportunity to host this meal in one of our meeting rooms complimentary for up to 2 hours and we charge the meals to the individual parent's rooms instead of it being the coach or team manager's responsibility.

Enjoy a casual dining experience and creative New England style dishes along with craft cocktails and brews at our Stone 31 Bar + Kitchen Restaurant.

Be sure to save some time to enjoy our heated indoor swimming pool and whirlpool or perhaps try your luck in our arcade! We look forward to seeing you soon!.

**BREAKFAST INCLUDED IN RATE**

**RESERVATION DEADLINE - 10/20/25**

**\*3 NIGHT MINIMUM REQUIRED\***

**RATE:**

**\$249.00**

Premium  
Double Queen Suite

**\$229.00**

Standard Double  
Queens

**\$189.00**

Standard King w/  
Pullout

**3 miles**



9 Nixon Rd, Westford, MA 01886  
**Contact: Ramona Rodriguez** (978) 392-1555  
[Ramona.Rodriguez@crestlinehotels.com](mailto:Ramona.Rodriguez@crestlinehotels.com)  
[CLICK HERE FOR WEBSITE](#)

### HAMPTON INN - WESTFORD

We're in Westford Technology Park, just off I-495. You'll find dozens of businesses just a few steps away, plus many shops and restaurants. It's three minutes to the Nashoba Valley Ski Area. In summer, take the kids to Kimball Farm, three miles away. Perks include free daily hot breakfast, WiFi, and EV charging station.

**BREAKFAST INCLUDED IN RATE**

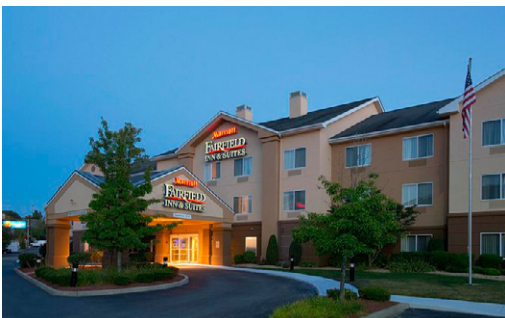
**RESERVATION DEADLINE - 11/5/25**

**RATE:**

**\$144.00**

Double Queens  
& King w/Pullout

**22 miles**



1 Fortune Blvd, Milford, MA 01757  
**Contact: Amanda Byrne** (603) 316-3937  
[abyrne@cc-smg.com](mailto:abyrne@cc-smg.com)  
[CLICK HERE FOR WEBSITE](#)

### FAIRFIELD INN BOSTON-MILFORD

Our hotel offers a great location off I-495 near both Boston and Providence, featuring refrigerators and micro-waves in all rooms. Our spacious rooms offer luxurious bedding and unique warm colors. After a great night's sleep enjoy our complimentary continental breakfast. After a long day, why not unwind and break away from business and enjoy a swim in our indoor saltwater pool.

**BREAKFAST INCLUDED IN RATE**

**RESERVATION DEADLINE - 10/10/24**

**RATE:**

**\$149.00**

Double Queens

**16 miles**



10 Johnson St, Auburn, MA 01501  
**Contact: Kathy Kirk (508) 837-2500**  
[KKirk@Roedelcompanies.com](mailto:KKirk@Roedelcompanies.com)  
[CLICK HERE FOR WEBSITE](#)

## HOLIDAY INN EXPRESS AUBURN

With our easy on easy off access to 290, 395 and the Mass Pike, we are the perfect destination, offering all the comforts of home and the convenience of an office. Warm and friendly service welcomes each of our guests, along with just baked fresh cookies. A spacious, clean guest-room equipped with microwaves, refrigerators, flat-screen TVs and a large desk for your business needs awaits you. Enjoy free Wi-Fi, a 24-hour business center, workout room and a hearty hot and cold breakfast, including our signature cinnamon rolls to get your day started right.

**BREAKFAST INCLUDED IN RATE**  
**RESERVATION DEADLINE - 11/5/25**  
**\*2 NIGHT MINIMUM REQUIRED\***

**RATE:**

**\$159.00**  
 Double Queens

**\$179.00**  
 King w/Pullout

**21 miles**



7 Lan Dr, Westford, MA 01886  
**Contact: Ramona Rodriguez (978) 392-1407**  
[Ramona.Rodriguez@crestlinehotels.com](mailto:Ramona.Rodriguez@crestlinehotels.com)  
[CLICK HERE FOR WEBSITE](#)

## RESIDENCE INN WESTFORD

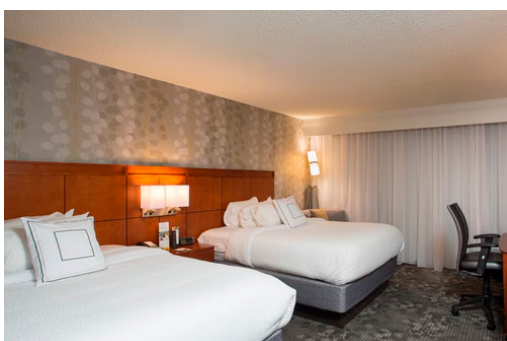
One of the best Chelmsford, MA hotels, Residence Inn Boston Westford is just 35 miles to the city and convenient to Nashoba Valley Ski Area, Technology Park, UMass Lowell, Kimball Farm, Gibbet Hill, Groton, and Lowell. Thrive in spacious studios, 1-, and 2-bedroom Westford, MA suites, with free WiFi and daily breakfast buffet plus pillowtop mattresses, 37" flat-screen TVs, well-lit desks, and full kitchens with a stove, refrigerator, microwave, and dishwasher. It's not a room, it's a Residence®, with hotel amenities including an indoor pool and fitness center, patio with grill, gazebo, basketball court, and firepit, only at our long-term stay hotel in Chelmsford, MA.

**BREAKFAST INCLUDED IN RATE**  
**RESERVATION DEADLINE - 11/5/25**

**RATE:**

**\$159.00**  
 Queen w/ Pullout  
 & King w/Pullout

**23 miles**



3 Technology Drive, Westborough, MA 01581  
**Contact: Stephanie Rose (513) 341-8476**  
[stephanie@invigoratehospitality.com](mailto:stephanie@invigoratehospitality.com)  
[CLICK HERE FOR WEBSITE](#)

## COURTYARD MARRIOTT WESTBOROUGH

Welcome to the Boston Westborough Courtyard by Marriott Hotel! Bistro service which offers breakfast featuring Starbucks beverages and light dinner fare in the evening. The hotel is nestled in a suburban oasis, the Courtyard by Marriott in Technology Park is an ideal location to experience Central Massachusetts. Easy access to Routes I-495, Route 9 & I-90 (Massachusetts Turnpike), you will find a variety of Westborough/Worcester/Boston/Providence area attractions such as newly opened Apex Entertainment Center, Marlborough's New England Sports Center, Solomon Pond Mall, Historic Boston, Fenway Park, Woo Sox, Gillette Stadium, TD Bank Garden, Xfinity Center, Worcester's DCU Center, Fidelity Bank Worcester Ice Rink, Worcester's Hanover Theatre, Natick Mall, Wrentham Village Premium Outlets, Blackstone Valley Shopping area, Northborough Crossing Shopping area and much more. Convenient to Boston's Logan International Airport (BOS)

**RESERVATION DEADLINE - 11/5/25**

**RATE:**

**\$164.00**  
 Double Queens &  
 King w/ Pullout

**8 miles**





738 Boston Post Rd, Sudbury, MA 01776  
**Contact: Meghan Birr** (978) 793-2259  
[MBirr@Colwenhotels.com](mailto:MBirr@Colwenhotels.com)  
[CLICK HERE FOR WEBSITE](#)

## FAIRFIELD INN BOSTON - SUDBURY

Located in Sudbury MA USA, the Fairfield Inn by Marriott Boston Sudbury offers outstanding service at an exceptional value. Our contemporary 48-room New England hotel boasts amenities like thoughtfully designed guest rooms, free WiFi, new flat screen TV's, a new fitness room and business center. Sudbury, MA is convenient to Boston, Cambridge and the Metro West areas, the MBTA and Boston Logan International Airport. Known for its rich history and natural scenery Sudbury MA offers a unique location for corporate, group, and leisure travel and is a featured destination for social events and weddings. Longfellow's Wayside Inn, an elegant dining and event landmark, is just a mile down historic Boston Post Road.

**BREAKFAST INCLUDED IN RATE**

**RESERVATION DEADLINE - 11/5/25**

**RATE:**

**\$164.00**  
 Double Queens &  
 King w/Pullout

**9 miles**



4 Highwood Dr, Tewksbury, MA 01876  
**Contact: Carol Scalesse** (978) 640-9000  
[Carol.Scalesse@Hilton.com](mailto:Carol.Scalesse@Hilton.com)  
[CLICK HERE FOR WEBSITE](#)

## HILTON GARDEN INN TEWKSBURY

Conveniently located just 35 minutes from the New England Sports Center right off of Route 495. This brand new hotel is perfect for your team! Featuring an indoor pool, fitness center, restaurant and bar, the Hilton Garden Inn has all the amenities you need. Breakfast for 2 is included in the rate.

**BREAKFAST INCLUDED IN RATE**

**RESERVATION DEADLINE - 11/5/25**

**RATE:**

**\$164.00**  
 Double Queens

**32 miles**



72 Grove St, Worcester, MA 01605  
**Contact: Linda Fogarty** (860) 391-6151  
[Linda.Fogarty@aimbridge.com](mailto:Linda.Fogarty@aimbridge.com)  
[CLICK HERE FOR WEBSITE](#)

## COURTYARD MARRIOTT WORCESTER

Feel welcome at Courtyard Worcester. Our newly renovated hotel near downtown Worcester MA has everything you need for a successful stay. Recharge in our hotel rooms with free WiFi, ergonomic workspaces, and signature plush Marriott bedding. Satisfy your appetite at the Bistro our onsite restaurant and bar serving healthy breakfast and dinner options, Starbucks coffee and evening cocktails. You can also try restaurants near our hotel like Via Italian Table, The Sole Proprietor and 111 Chop House. Maintain your fitness at our indoor pool and fitness center.

**\$15 PARKING PER DAY, PER VEHICLE**

**RESERVATION DEADLINE - 11/5/25**

**RATE:**

**\$169.00**  
 Double Queens

**14 miles**



130 Worcester Rd, Framingham, MA 01702

**Contact: Carrie Johnson** (520) 262-3375

[carrie@invigoratehospitality.com](mailto:carrie@invigoratehospitality.com)

[CLICK HERE FOR WEBSITE](#)

## ALOFT FRAMINGHAM

Immerse yourself in stylish comfort in loft-inspired hotel accommodations with free Wi-Fi, luxury bedding, and Dry Bar bathroom amenities. Under a mile from Natick Mall, one of New England's largest shopping centers as well as 20+ restaurants. During downtime, guests can utilize our fitness center or take a swim in our indoor heated saline pool. We are the next generation of hotels, using technology and design to enhance experiences and move at the pace of our guests. Different. By design.

**BREAKFAST INCLUDED IN RATE**

**RESERVATION DEADLINE - 11/5/25**

**RATE:**

**\$169.00**  
Double Queens

**16 miles**



10 Fortune Blvd, Milford, MA 01757

**Contact: Lynn Sinclair** (508) 634-9500 ext. 629

[Lynn.Sinclair@Sonesta.com](mailto:Lynn.Sinclair@Sonesta.com)

[CLICK HERE FOR WEBSITE](#)

## SONESTA SELECT BOSTON - MILFORD

Following a busy day, kick back in comfort in one of our spacious rooms or suites. We provide modern amenities including plush bedding, a movable desk, and mini fridge for a relaxing stay. If you're hosting an event, our flexible meeting space is great for accommodating business conferences and social gatherings. Active travelers can take advantage of our indoor pool and 24-hour fitness center to maintain a healthy lifestyle. During downtime, relax on the refreshing outdoor patio as you take a seat around our cozy fire pit. With Sonesta Select, it's the kind of stay you'll want to write home about.

**BREAKFAST INCLUDED IN RATE**

**RESERVATION DEADLINE - 11/5/25**

**RATE:**

**\$169.00**  
Double Queens &  
King w/Pullout

**16 miles**



1360 Worcester St, Natick, MA 01760

**Contact: Christine Tascione** (508) 653-8800

[CRT@dhghotels.com](mailto:CRT@dhghotels.com)

[CLICK HERE FOR WEBSITE](#)

## VERVE HOTEL BOSTON-NATICK

Across the street from premium shops at Natick Mall, our hotel features decor inspired by four decades of 20th century American pop culture. Downtown Boston is in easy reach, and Framingham State University and Wellesley College are within five miles. Enjoy the vibrant ambience at Violet Thorn lounge and creative cuisine at our restaurant, Pantry. Our fitness center also awaits.

**RESERVATION DEADLINE - 10/10/24**

**\*3 NIGHT MINIMUM REQUIRED\***

**RATE:**

**\$169.00**  
Double Beds

**20 miles**



319 Speen St, Natick, MA 01760  
**Contact: Christine Tascione** (508) 653-5000  
[CRT@dhghotels.com](mailto:CRT@dhghotels.com)  
[CLICK HERE FOR WEBSITE](#)

## HAMPTON INN BOSTON-NATICK

We're across the street from Natick Mall and less than a mile from I-90. The Center for Arts in Natick and Cochituate State Park are within three miles. Downtown Boston and Boston Logan International Airport BOS are 23 miles away. We offer free hot breakfast every morning, a restaurant and bar, a fitness center, and event space.

**BREAKFAST INCLUDED IN RATE**  
**RESERVATION DEADLINE - 11/5/25**  
**\*3 NIGHT MINIMUM REQUIRED\***

**RATE:**

**\$169.00**  
 Double Beds &  
 King w/Pullout

**20 miles**



170 Forest St, Marlborough, MA 01752  
**Contact: Jenna Vallee** (508) 251-6706  
[jvallee@csmcorp.net](mailto:jvallee@csmcorp.net)  
[CLICK HERE FOR WEBSITE](#)

## HILTON GARDEN INN MARLBOROUGH

Off I-495, we're in Forest Hills business park, adjacent to corporate offices for Quest Diagnostics, Whole Foods, and Cytiva. Central Marlborough, Apex Center's entertainment and dining, and New England Sports Center are within four miles. Enjoy our patio with firepit area, fitness center, and onsite dining at BLVD Kitchen & Bar.

**RESERVATION DEADLINE - 10/23/25**  
**\*2 NIGHT MINIMUM REQUIRED\***

**RATE:**

**\$174.00**  
 Double Queens

**\$184.00**  
 King w/Pullout

**4 miles**



70 3rd Ave, Waltham, MA 02451  
**Contact: Danielle Colon** (813) 235-8094  
[Dcolon@heihotels.com](mailto:Dcolon@heihotels.com)  
[CLICK HERE FOR WEBSITE](#)

## WESTIN WALTHAM

Only 15 miles from downtown Boston, our hotel near Belmont, MA, provides easy access to Concord, Lexington and Cambridge. With IBM and Microsoft offices just one mile away, our location is incredibly convenient for business travelers. Our hotel is the perfect location for business and leisure. Host a memorable meeting in our 20,500 square feet of space, and afterward stay fit in the WestinWORKOUT® Fitness Studio. The outdoor terrace provides the perfect spot for a wholesome lunch, while the Lobby Lounge invites you to relax with cocktails. Our updated 351 guest rooms and suites feature the famous Heavenly® Bed and Heavenly® Shower to ensure a comfortable stay. Maintain productivity with high-speed internet access, rise and shine with Starbucks® coffee and relax with a flat-screen TV. Looking for a place to stay with your furry friend? Our pet-friendly hotel makes for the perfect place for you and your furry friend to stay in Waltham Boston.

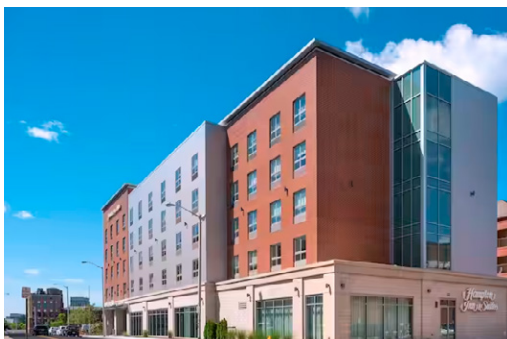
**RESERVATION DEADLINE - 11/5/25**

**RATE:**

**\$175.00**  
 Double Queens

**22 miles**





65 Prescott St, Worcester, MA 01605  
**Contact: Linda Fogarty (860) 391-6151**  
[Linda.Fogarty@aimbridge.com](mailto:Linda.Fogarty@aimbridge.com)  
[CLICK HERE FOR WEBSITE](#)

## HAMPTON INN & SUITES WORCESTER

Find us on the Worcester Polytechnic Institute campus, steps from downtown's mix of shops, breweries, and restaurants. UMass Memorial Medical Center and the Worcester Art Museum are within a mile and the EcoTarium is three miles away. We're five minutes from the commuter rail to Boston. Enjoy our modern rooms and free, hot breakfast served daily.

**BREAKFAST INCLUDED IN RATE**

**\$15 PARKING PER NIGHT**

**RESERVATION DEADLINE - 11/5/2025**

**RATE:**

**\$179.00**  
Double Queens

**14 miles**



320 Baker Avenue Extension, Concord, MA 01742  
**Contact: Allison Davino (978) 341-0003**  
[ADavino@colwenhotels.com](mailto:ADavino@colwenhotels.com)  
[CLICK HERE FOR WEBSITE](#)

## RESIDENCE INN BOSTON-CONCORD

The newly renovated Residence Inn Boston Concord is ideally situated just a few minutes' drive from charming downtown Concord, MA, just moments away from historic landmarks including Minuteman National Park, Walden Pond, and the Old North Bridge. Many of the area's top companies are also just minutes away. Including Welch's, Emerson Medical Center, Insulet, Honeywell, Stratus, aPriori, SmashFly, and many more. Residence Inn Boston Concord boasts 118 stylish and contemporary extended-stay guestrooms all equipped with free WiFi, luxury bedding, efficient work space, full kitchens, and spacious living areas. Utilize our complimentary shuttle service available upon request. Start your morning off right with our free hot breakfast buffet featuring fresh fruit and a customization station to make it the way you want. Our lobby bar and lounge offers a menu of local brews, signature cocktails, and delicious food. As a LEED Certified candidate, our hotel features a 24-hour fitness center.

**RESERVATION DEADLINE - 11/5/25**

**RATE:**

**\$179.00**  
King w/Pullout

**22 miles**



169 Apex Dr, Marlborough, MA 01752  
**Contact: Alexandra Wilson (774) 843-2360**  
[Alexandra.Wilson@Hyatt.com](mailto:Alexandra.Wilson@Hyatt.com)  
[CLICK HERE FOR WEBSITE](#)

## HYATT PLACE MARLBOROUGH

Whether you want to enjoy a suite with more space for spreading out with family, share a memorable meal with friends, or wellbeing experience, our spacious, comfortable rooms offer a respite from the outside world, and some include picturesque views and full kitchens. Wake up to free breakfast served every day at The Breakfast Bar where you'll find a wide array of choices from fresh fruit, yogurt, and granola, to eggs, hash browns, waffles, and more.

**BREAKFAST INCLUDED IN RATE**

**RESERVATION DEADLINE - 10/23/25**

**RATE:**

**\$189.00**  
Double Queens  
w/Pullout & King  
w/Pullout

**3 miles**



60 River Rd W, Berlin, MA 01503  
**Contact: Tammy Burns** (978) 838-9940  
[tammy.burns@hilton.com](mailto:tammy.burns@hilton.com)  
[CLICK HERE FOR WEBSITE](#)

## HOMESWOOD SUITES BOSTON-MARLBOROUGH

We're a half-mile off I-290, within 15-minutes of Downtown Marlborough, the Nashoba Valley Winery, and Tower Hill Botanic Garden. Solomond Pond Golf Center is one-minute away. Enjoy our indoor pool, fitness center, and fully equipped kitchens in our suites. We offer free hot breakfast, a complimentary evening social on Wednesdays, and free WiFi.

**BREAKFAST INCLUDED IN RATE**  
**RESERVATION DEADLINE - 11/5/25**

**RATE:**  
**\$195.00**  
King w/Pullout  
Queen w/Pullout

**2 miles**



112 Donald Lynch Blvd, Marlborough, MA 01752  
**Contact: Ramona Rodriguez** (508) 305-3804  
[Ramona.Rodriguez@crestlinehotels.com](mailto:Ramona.Rodriguez@crestlinehotels.com)  
[CLICK HERE FOR WEBSITE](#)

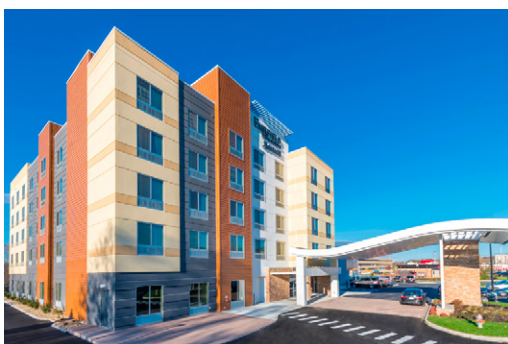
## RESIDENCE INN BOSTON-MARLBOROUGH

Thrive at our Marlborough, MA hotel: The Residence Inn Boston Marlborough, an all-suite, long-term stay hotel in Marlborough, MA next door to Boston Scientific and across from New England Sports Center, Apex Marlborough, close to Technology Drive, Raytheon, and Solomon Pond Mall. It's not a room, it's a Residence®, in our furnished apartments – studio, 1- and 2-bedroom suites with free WiFi and a breakfast buffet, separate living and sleeping, full kitchens, spacious work desks, and sofa beds. Open your door to our pet-friendly hotel in Marlborough, MA, with an indoor pool and fitness center, miniature golf putting green, basketball/tennis court, and an outdoor patio where you can unwind at the grill and firepit.

**BREAKFAST INCLUDED IN RATE**  
**RESERVATION DEADLINE - 11/5/25**

**RATE:**  
**\$199.00**  
King w/Pullout &  
Queen w/Pullout

**.1 miles**



105 Apex Dr, Marlborough, MA 01752  
**Contact: Alexandra Wilson** (774) 843-2472  
[AWilson@truenorthhotels.com](mailto:AWilson@truenorthhotels.com)  
[CLICK HERE FOR WEBSITE](#)

## FAIRFIELD INN MARLBOROUGH

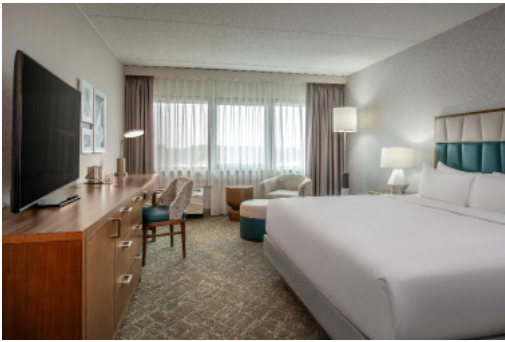
Fairfield Inn & Suites Boston Marlborough Apex Center is just steps away from shopping and dining, salons and spas, kid-friendly activities, office parks, and so much more. Enjoy our unique, exciting city situated between Boston and Worcester, letting you explore the best of Massachusetts during your stay. You'll be ready to tackle the day with our complimentary breakfast, and you can stay connected with free Wi-Fi throughout the hotel. Our indoor pool and fitness center will help you stay on track, and our spacious guest rooms and suites will give you plenty of room to work and relax.

**BREAKFAST INCLUDED IN RATE**  
**RESERVATION DEADLINE - 10/23/25**

**RATE:**  
**\$199.00**  
Double Queens

**3 miles**





5400 Computer Dr, Westborough, MA 01581

**Contact: Oliver Knight** (508) 213-3070

[oliver.knight@hilton.com](mailto:oliver.knight@hilton.com)

[CLICK HERE FOR WEBSITE](#)

## DOUBLETREE BOSTON-WESTBOROUGH

*Where the Little Things Mean Everything. DoubleTree by Hilton is the hotel that turns travel into a human experience again. It all starts with a warm chocolate chip cookie, a small touch of our warmth and care for each guest; we provide genuine highly-experienced staff who are dedicated to helping your stay be the very best it can be. Come see us! We'll always have a cookie with your name on it ready and waiting.*

**BREAKFAST INCLUDED IN RATE**

**RESERVATION DEADLINE - 11/5/25**

**RATE:**

**\$199.00**  
Double Queens

**8 miles**