



2025

FALL SHOWCASE

EVENT DATES: SEPTEMBER 25 - 28

SUPER RINK
1850 105TH AVE NE
MINNEAPOLIS, MN 55449

FOGERTY ICE ARENA
9250 LINCOLN ST NE
BLAINE, MN 55434

RESERVATION DEADLINE 9/10/25

HOTEL ROOM BLOCK BEGINS 9/24



2540 North Cleveland Avenue, Roseville, MN 55113
Contact: Samantha Miller (651) 367-3906
samantha.miller@hilton.com
[CLICK HERE FOR WEBSITE](#)

DOUBLETREE BY HILTON ROSEVILLE

DoubleTree by Hilton Roseville Minneapolis in Roseville, you'll be in the business district, a 3-minute drive from the Twin Cities. Make yourself at home in rooms featuring refrigerators and flat-screen televisions. Complimentary wired and wireless Internet access keeps you connected, and cable programming provides entertainment. Enjoy American cuisine at Axels Charhouse, a restaurant which features a bar/lounge, or stay in and take advantage of the room service.

BREAKFAST INCLUDED IN RATE

RESERVATION DEADLINE - 9/10/25

RATE:

\$169.00
 Double Queens
 and King w/
 Pullout

12.2 miles

NAHL HOST HOTEL



3015 Centre Pointe Dr N, Roseville, MN 55113
Contact: Will Mayer (651) 401-4700
WMayer@Kinseth.com
[CLICK HERE FOR WEBSITE](#)

AVID HOTEL ROSEVILLE - MINNEAPOLIS NORTH

Welcome to avid Hotel Roseville Minneapolis North. Centrally located between Minneapolis and St. Paul with easy access from 35W & 694. Our hotel is minutes away from the Minnesota Fairgrounds, Como Park & Zoo and the Universities of Northwestern, University of Minnesota, Hamline and Bethel. We are also next to shopping, dining and entertainment at the Roseville Center and AMC Roseville.

BREAKFAST INCLUDED IN RATE

RESERVATION DEADLINE - 9/10/25

RATE:

\$134.00
 Double Queens &
 Single King

10 miles



2401 American Blvd E, Bloomington, MN 55425
Contact: Katie Smith (320) 492-5980
katie.smith@aimbridge.com
[CLICK HERE FOR WEBSITE](#)

FAIRFIELD INN & SUITES BY MARRIOTT MINNEAPOLIS BLOOMINGTON/MALL OF AMERICA

Enjoy a comfortable stay at Fairfield Inn & Suites Minneapolis Bloomington/Mall of America. Our Bloomington MN hotel has everything you need to maintain your balance during travel. Recharge in our comfortable rooms and suites with plush Marriott bedding, ergonomic workspaces, and free Wi-Fi. No matter what brings you to town, enjoy it at Fairfield Inn & Suites Mall of America.

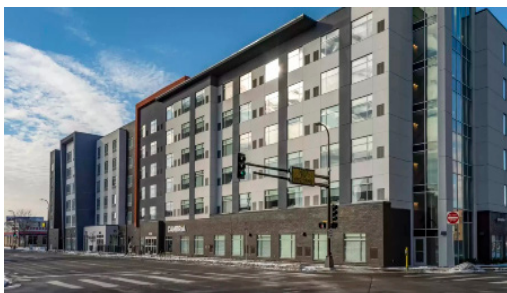
BREAKFAST INCLUDED IN RATE

RESERVATION DEADLINE - 9/10/25

RATE:

\$143.00
 Double Queens

28 miles



1020 Hawthorne Ave, Minneapolis, MN 55403

Contact: Gina Grobel (612) 295-0565

Gina.Grobel@Hawkeyehotels.com

[CLICK HERE FOR WEBSITE](#)

CAMBRIA SUITES DOWNTOWN MINNEAPOLIS

The Cambria Hotel Minneapolis Downtown offers a range of amenities to enhance your stay in the heart of the city. Indulge in locally inspired cuisine and sip a local craft beer, wine, or specialty cocktail at the on-site restaurant and bar. Stay on top of your workout routine with the state-of-the-art fitness center and keep connected with free WiFi available throughout the hotel. Hosting an event? Ask about the meeting space and catering services. Enjoy access to laundry service, a business center, and a range of accessibility amenities for your convenience.

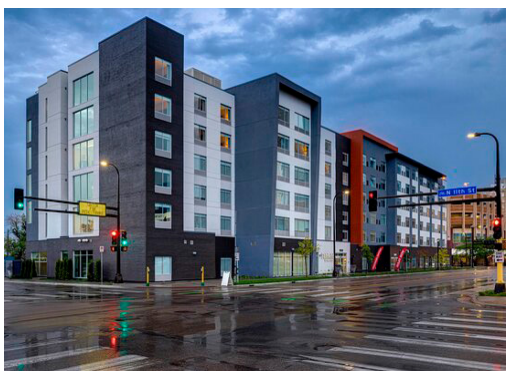
BREAKFAST INCLUDED IN RATE

RESERVATION DEADLINE - 9/10/25

RATE:

\$144.00
Double Queens

16 miles



1028 Hawthorne Ave, Minneapolis, MN 55403

Contact: Gina Grobel (612) 295-0565

Gina.Grobel@Hawkeyehotels.com

[CLICK HERE FOR WEBSITE](#)

FAIRFIELD INN & SUITES DOWNTOWN MINNEAPOLIS

Welcome to the Fairfield Inn & Suites Minneapolis Downtown. Our hotel is conveniently located right off of Highway I-394 in the heart of downtown Minneapolis. For guests looking to catch a sporting event we are within walking distance to both Target Center and Target Field. We are also just a mile away from US Bank Stadium. Looking to catch a concert or musical while in the twin cities? We are close to local venues including First Avenue and the Orpheum Theater.

BREAKFAST INCLUDED IN RATE

\$10/night parking

\$150/night per bus

RESERVATION DEADLINE - 9/10/25

RATE:

\$144.00
Double Queens

16 miles



3635 Crestridge Dr, Eagan, MN 55122

Contact: Adam Grunz (651) 365-4902

Adam.Grunz@Aimbridge.com

[CLICK HERE FOR WEBSITE](#)

SPRINGHILL SUITES EAGAN

Refresh at SpringHill Suites Minneapolis-St. Paul Airport/ Eagan. Our Eagan MN hotel offers little extras that add up to an exceptional stay. Relax in our spacious suites with free Wi-Fi, plush Marriott bedding, and large work-spaces. Start your day with delicious selections from our free breakfast buffet, serving hot coffee, waffles, healthy yogurts, eggs, meat, & more, to add a little more energy to your stay. Explore delicious local dining in Eagan with options like Chili's, Perkins, Granite City, and Houlihan's near our hotel. Be your best self at our refreshing indoor pool and 24/7 fitness center.

BREAKFAST INCLUDED IN RATE

RESERVATION DEADLINE - 9/10/25

RATE:

\$148.00
Double Queens
& King w/ Pullout

30 miles



TRU BY HILTON MINNEAPOLIS DOWNTOWN

A bank building reimagined, our hotel is connected to the Skyway System (opening hours may vary) and is just three blocks from Nicollet Mall and riverfront parks. Vikings and Twins games are within a mile. Along with free breakfast and a 24/7 market, we offer games in the lobby and a fitness center.

BREAKFAST INCLUDED IN RATE

RESERVATION DEADLINE - 9/10/25

RATE:

\$149.00
Double Queens &
Kings w / pullout

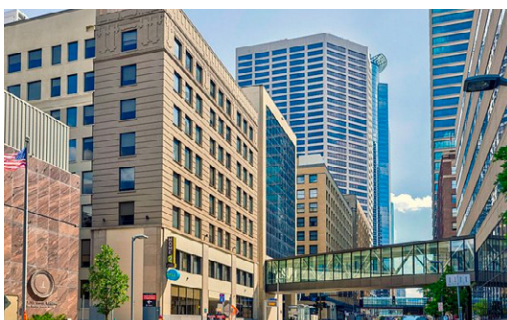
18 miles

317 2nd Ave S, Minneapolis, MN 55401

Contact: Marlon Monreal-Caponi (612) 351-3499

Marlon.Monreal-Caponi@Hawkeyehotels.com

[CLICK HERE FOR WEBSITE](#)



HOME2 SUITES BY HILTON MINNEAPOLIS DOWNTOWN

A former bank building, our all-suite hotel connects to the Skyway System (opening hours may vary). We are three blocks from Nicollet Mall and riverfront parks. First Avenue concerts and Twins and Vikings games are all within a mile. Join us for free breakfast or cook meals in your in-suite kitchen with full-size appliances.

BREAKFAST INCLUDED IN RATE

RESERVATION DEADLINE - 9/10/25

RATE:

\$149.00
King w/ Pullout &
full kitchen

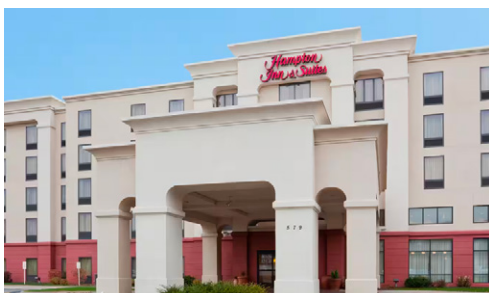
18 miles

317 2nd Ave S, Minneapolis, MN 55401

Contact: Marlon Monreal-Caponi (612) 351-3499

Marlon.Monreal-Caponi@Hawkeyehotels.com

[CLICK HERE FOR WEBSITE](#)



HAMPTON INN & SUITES LINO LAKES

Our Lino Lakes hotel is just off I-35W, 20 miles from the Twin Cities, and next to the Rice Creek Chain of Lakes Regional Park Reserve. It's a great spot for boating, fishing, hiking, and biking. Or enjoy a round at the Chamomix Golf Course, five minutes away. Relax in our game room, indoor pool, whirlpool, and sauna. WiFi and hot breakfast are free.

BREAKFAST INCLUDED IN RATE

RESERVATION DEADLINE - 9/10/25

RATE:

\$154.00
Double Queens &
King w/ Pullout

6 miles

579 Apollo Dr, Lino Lakes, MN 55014

Contact: Barb White (763) 746-5160

Barbara.White@Hilton.com

[CLICK HERE FOR WEBSITE](#)



2550 Freeway Blvd, Brooklyn Center, MN 55430

Contact: Enzo Rodriguez (763)561-0900

GM@CountryInnbc.com

[CLICK HERE FOR WEBSITE](#)

COUNTRY INN & SUITES BROOKLYN CENTER

The Country Inn & Suites by Radisson, Brooklyn Center, MN offers you an affordable stay near Brooklyn Park and about 10 miles from the National Sports Center (NSC). The hotel is just half an hour from Minneapolis-St. Paul International Airport (MSP) via I-94. After a busy day, you can head to our indoor pool for a refreshing dip or stop by our fitness center to decompress with a workout. Free Wi-Fi keeps you connected to family as well as your favorite music and shows. Before you hit the road each morning, visit our inviting dining area for a free, hot breakfast featuring our signature waffles. Free Parking available.

BREAKFAST INCLUDED IN RATE

RESERVATION DEADLINE - 9/10/25

RATE:

\$154.00
Double Queens
& King w/ Pullout

11 miles



6300 Earle Brown Dr., Brooklyn Center, MN 55430

Contact: Jason Wilson (763)560-2700 ext. 7178

Jason.Wilson@OCIHospitality.com

[CLICK HERE FOR WEBSITE](#)

EMBASSY SUITES MINNEAPOLIS NORTH

Our suites are adjacent to the Earle Brown Heritage Center and two miles from Brooklyn Center. We're 15 minutes from downtown Minneapolis hotspots such as Target Center and Guthrie Theatre, and the Mall of America is 23 minutes away. Enjoy our free made-to-order breakfast and complimentary evening reception.

BREAKFAST INCLUDED IN RATE

RESERVATION DEADLINE - 9/10/25

RATE:

\$154.00
Double Queens &
King w/ Pullout

16 miles



12201 Ridgedale Dr, Minnetonka, MN 55305

Contact: Sue Ratliff (952) 960-3535

sueratliff@remingtonhotels.com

[CLICK HERE FOR WEBSITE](#)

SHERATON MINNEAPOLIS WEST

Discover modern comfort at Sheraton Minneapolis West Hotel. Our Minnetonka hotel is a short drive from downtown Minneapolis, MN, MSP Airport and Lake Minnetonka. Enter our lovely grand atrium and feel right at home as our staff warmly welcomes you. Relax in our spacious and comfortable guestrooms and suites, featuring a Sheraton Sleep Experience Bed, high-speed Wi-Fi and a refrigerator. Enjoy breakfast at Atrium Bistro or stop by The Reserve Lounge for dinner or cocktails overlooking Crane Lake Wildlife Reserve. Swim in our heated indoor pool and stay fit in our 24/7 Sheraton Fitness Center.

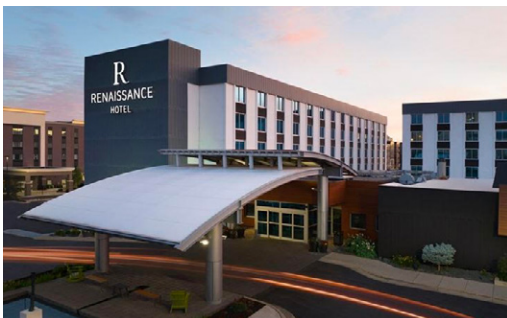
BREAKFAST INCLUDED IN RATE

RESERVATION DEADLINE - 9/10/25

RATE:

\$154.00
Double Queens

24 miles



5500 American BLVD W, Bloomington, MN 55457

Contact: Melanie Larson (952) 345-1244

mealanie.larson@rhhbloomington.com

[CLICK HERE FOR WEBSITE](#)

RENAISSANCE MINNEAPOLIS - BLOOMINGTON

Our hip, recently refreshed hotel is a short drive from the Minneapolis-Saint Paul International Airport, as well as the Mall of America, US Bank Stadium and light rail. Work out in our 24-hour fitness center or heated Junior Olympic-sized pool. Foodies appreciate our on-site restaurant LARS, which serves modern cuisine with a playful Minnesota twist. Our hotel restaurant is now open for guests to dine in for breakfast and dinner. At the end of the day, relax in an upscale hotel room that has been refreshed for extra comfort.

BREAKFAST INCLUDED FOR 4 PEOPLE PER ROOM

RESERVATION DEADLINE - 9/10/25

RATE:

\$155.00

Double Queens &
King w/ Pullout

27 miles



2740 E Snelling Ave N, Roseville, MN 55113

Contact: Kaylynn Morrow (320) 370-1741

KEMorrow@sandcompanies.com

[CLICK HERE FOR WEBSITE](#)

COUNTRY INN & SUITES

Situated less than 20 minutes outside of the Twin Cities, we provide business and leisure travelers with a peaceful suburban retreat. After a day of travel along I-35, drop off your bags in one of our hotel rooms and treat yourself to a dip in our indoor pool. If you'd prefer to take in some fresh air, you can grab a book from your bag and enjoy some quiet time on our outdoor patio with a firepit. Come morning, kick-start your day with a satisfying meal at our free, hot breakfast featuring our signature waffles. You can return later for a warm cup of coffee or a cookie in our lobby. We also offer a well-equipped fitness center and a 24-hour business center.

BREAKFAST INCLUDED IN RATE

RESERVATION DEADLINE - 9/10/25

RATE:

\$157.00

Double Queens
and King w/
Pullout

12.7 miles



6250 Earle Brown Dr, Brooklyn Center, MN 55430

Contact: Nicole French (651) 734-5404

nfrench@empirehotelsgroup.com

[CLICK HERE for WEBSITE](#)

FAIRFIELD INN & SUITES, MPLS - NORTH

Conveniently located just under 8 miles from the heart of Minneapolis just off highway 694. With many appealing complimentary amenities, including a well-stocked breakfast buffet, high speed Wi-Fi ensuring productivity while you are with us, and an open-air parking lot, you can stay comfortably without all the bustle of downtown. Don't miss a beat from your routine at home, with an up to date fitness center, and a pool to relax in.

BREAKFAST INCLUDED IN RATE

RESERVATION DEADLINE - 9/10/25

RATE:

\$159.00

Double Queens &
King w/ pullout

11 miles



3920 Northwoods Dr, Arden Hills, MN 55112

Contact: Sokhom Sok (612) 670-6685

Sokhom.Sok@Hawkeyehotels.com

[CLICK HERE FOR WEBSITE](#)

SPRINGHILL SUITES ARDEN HILLS

Come enjoy your stay at our new Springhill Suites! Located conveniently off of Interstate 694 the hotel is less than 15 minutes from Downtown Minneapolis. The spacious suites include over 350 square feet of space, high speed internet, luxury linens, flat screen televisions, microwaves and fridges. The vibrant lobby offers flexible spaces perfect for meeting, relaxing or enjoying your complimentary hot breakfast. Take the stress out of travel with free Wi-Fi, relaxing pool, fitness center and our market, which is open 24/7 for snacks and necessities. Quite simply, from business trips to leisurely journeys, SpringHill Suites is a breath of fresh air.

BREAKFAST INCLUDED IN RATE

RESERVATION DEADLINE - 9/10/25

RATE:

\$159.00

Double Queens &
King w/ Pullout

11 miles



2020 Iona Ln, Roseville, MN 55113

Contact: Angie Winkel (651) 269-4669

angie.winkel@tpihospitality.com

[CLICK HERE FOR WEBSITE](#)

HOME 2 SUITES - ROSEVILLE

Roseville dining and shops are on your doorstep, with Minneapolis and St. Paul both a 15-minute drive away. Budding scientists will be near the Science Museum of Minnesota and the Como Park Zoo & Conservatory. Business guests will be close to Boston Scientific offices. WiFi and breakfast are on us, or rustle something up in your in-suite kitchen.

BREAKFAST INCLUDED IN RATE

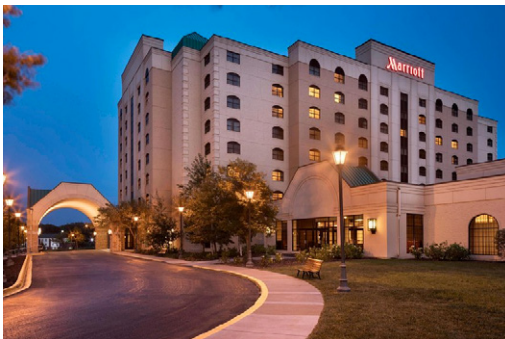
RESERVATION DEADLINE - 9/10/25

RATE:

\$159.00

Queen w/ Sofa
Pullout

11.7 miles



7025 Northland Dr N, Brooklyn Park, MN 55428

Contact: Cody Rogala (763) 536-3331

cody.rogala@minneapolismarriottnw.com

[CLICK HERE FOR WEBSITE](#)

MINNEAPOLIS MARRIOTT NORTHWEST

Minneapolis Marriott Northwest is a newly renovated all-suite, full-service hotel located conveniently near Highway 694/94 making it accessible to any location around the metro. Our all-Suite hotel features oversized guest rooms with separate sleeping and living rooms as well as complimentary hospitality spaces and ample onsite complimentary self-parking makes it the perfect spot for sports teams. We are located just 5 minutes from The Shoppes at Arbor Lakes and Maple Grove where there is plenty of options for entertainment, shopping and food and beverage. Should the need arise, our property also has 60,000 square feet of unique meeting space and a full on-site catering team.

Amenities:

Full-Service restaurant/bar

Full-Service Coffee Shop/Cafe

Complimentary parking

Indoor pool

Mini - fridge in every guest suite

Microwaves available upon request

24/7 fitness center

Business Center

BREAKFAST INCLUDED IN RATE

RESERVATION DEADLINE - 9/10/25

RATE:

\$159.00

Double Queens

15.3 miles



STAYBRIDGE SUITES MAPLE GROVE

Welcome to Staybridge Suites® Minneapolis - Maple Grove / Arbor Lakes, MN located in a beautiful suburban area northwest of downtown Minneapolis. Located 30 miles from MSP Airport. With nearby walking trails and a scenic courtyard area, as well as a convenient location right in the Arbor Lakes development, the hotel is the perfect home away from home for all travelers.

BREAKFAST INCLUDED IN RATE

RESERVATION DEADLINE - 9/10/25

RATE:
\$159.00
Queen
w/Pullout

16 miles

7821 Elm Creek Blvd N, Maple Grove, MN 55369

Contact: Angie Winkel (651) 269-4669

Angie.Winkel@TpiHospitality.com

[CLICK HERE FOR WEBSITE](#)



DELTA HOTELS BY MARRIOTT MINNEAPOLIS NE

At Delta Hotels by Marriott Minneapolis Northeast, we focus on the details that matter. Elegant modern spaces for celebrating with up to 400 of your favorite people, delicious fresh food, spacious guest rooms with ultra-comfortable beds, complimentary parking, complimentary Wi-Fi and an onsite restaurant and bar featuring all day dining options and a great Private Dining Room. Simple Made Perfect.

BREAKFAST INCLUDED IN RATE

RESERVATION DEADLINE - 9/10/25

RATE:
\$159.00
Double Queens

18 miles

1330 Industrial Blvd NE, Minneapolis, MN 55413

Contact: Dana Droog (612) 455-6332

Dana.Droog@ScalzoHospitality.com

[CLICK HERE FOR WEBSITE](#)



HILTON GARDEN INN - MAPLE GROVE

We're right off I-494, 15 miles north west of central Minneapolis, and a short drive to The Shoppes at Arbor Lakes, with a wide variety of shops and restaurants in the area. The National Sports Center is a 25-minute drive away in Blaine. Perks include free WiFi and an indoor pool. The Garden Grille & Bar serves breakfast and dinner.

BREAKFAST INCLUDED IN RATE

RESERVATION DEADLINE - 9/10/25

RATE:
\$159.00
Double Queens &
King w/ Pullout

19 miles

6350 Vinewood Ln N, Maple Grove, MN 55311

Contact: Bernie Kelcher (651) 428-6139

bkelcher@nchotels.com

[CLICK HERE FOR WEBSITE](#)



5901 Wayzata Blvd, St Louis Park, MN 55416

Contact: Liz Siegrist (952) 738-7902

liz.siegrist@aimbridge.com

[CLICK HERE FOR WEBSITE](#)

SPRINGHILL SUITES BY MARRIOTT MINNEAPOLIS WEST/ST. LOUIS PARK

Our St. Louis Park hotel offers everything you need to travel in style. Recharge in our modern suites with Marriott bedding, workspaces, and sofa beds. Savor free breakfast served every morning and enjoy dining at nearby restaurants like TGI Fridays, Yard House, and The Loop. Stay active at our heated indoor pool and 24-hour fitness center or head to Theodore Wirth Golf Club nearby for outdoor recreation. Explore the local area with a visit to the Theater District and top attractions like Target Field, U.S. Bank Stadium, and The Shops at West End. We're also close to medical facilities like Methodist Hospital, Park Nicollet, and Abbott Northwestern. Our free parking and convenient location near Pentair, General Mills, and Wells Fargo make our event venues a great choice for your next meeting. No matter how long you're in town, enjoy it at SpringHill Suites St. Louis Park.

BREAKFAST INCLUDED IN RATE

RESERVATION DEADLINE - 9/10/25

RATE:

\$159.00

Double Queens &
King w/ Pullout

20 miles



11657 Arbor Lakes Parkway N, Maple Grove, MN

Contact: Angie Winkel (651) 269-4669

angie.winkel@tpihospitality.com

[CLICK HERE FOR WEBSITE](#)

SPRINGHILL SUITES - MAPLE GROVE

Experience the new SpringHill Suites Minneapolis Maple Grove/Arbor Lakes located in the heart of Arbor Lakes, a collection of independent stores, specialty chains and national brands, plus a variety of restaurants and entertainment. Enjoy our free breakfast buffet with a selection of eggs, sausage or bacon, cereals, fruit and Greek yogurt. Each 55-inch flat screen TV has the ability to stream Netflix and Hulu. The large, 24-hour fitness center is equipped with free weights and cardio equipment and our indoor pool and outdoor patio with firepit.

BREAKFAST INCLUDED IN RATE

RESERVATION DEADLINE - 9/10/25

RATE:

\$162.00

King w/ Pullout

15 miles



1815 Old Hwy 8 NW, New Brighton, MN 55112

Contact: Angie Winkel (651) 269-4669

angie.winkel@tpihospitality.com

[CLICK HERE FOR WEBSITE](#)

HOMEWOOD SUITES NEW BRIGHTON

We're 20 minutes north of Minneapolis and St. Paul, and moments from Blaine, Shoreview and Roseville. From our location near I-35, the National Sports Center, Land O'Lakes, and Medtronic are easy to reach. Finish the day at our free evening social every Wednesday. or with a meal in your in-suite kitchen. WiFi and breakfast are on us.

BREAKFAST INCLUDED IN RATE

RESERVATION DEADLINE - 9/10/25

RATE:

\$165.00

King W/ Pullout

7 miles



2050 Iona Ln West, Roseville, MN 55113

Contact: Angie Winkel (651) 269-4669

angie.winkel@tpihospitality.com

[CLICK HERE for WEBSITE](#)

HAMPTON INN - ROSEVILLE

Located off I-35W, we're seven miles from downtown Minneapolis, and 12 miles from St. Paul. Shop and dine at the Rosedale Center, two miles away. The University of Minnesota and University of Northwestern-St. Paul are within 10 minutes of the hotel, and the airport is 25 minutes' drive. Relax with our indoor pool, free hot breakfast, and free WiFi.

BREAKFAST INCLUDED IN RATE

RESERVATION DEADLINE - 9/10/25

RATE:

\$169.00

Double Queens

10.5 miles



2985 Centre Pointe Dr, Roseville, MN 55113

Contact: Angie Winkel (651) 269-4669

angie.winkel@tpihospitality.com

[CLICK HERE for WEBSITE](#)

RESIDENCE INN BY MARRIOTT - ROSEVILLE

Experience comfort in a modern setting with our newly renovated Residence Inn Minneapolis St. Paul/Roseville. Perfectly positioned with easy access to downtown Minneapolis, St. Paul and major interstates I-35W and I-694. The Residence Inn by Marriott Roseville is an extended stay hotel, featuring spacious suites with fully equipped kitchen, separate living and sleeping areas, and free high-speed internet. The hotel's newly renovated fitness facilities include an exercise room, indoor pool and whirlpool, outdoor sport court and 2 mile paved walking path.

BREAKFAST INCLUDED IN RATE

RESERVATION DEADLINE - 9/10/25

RATE:

\$169.00

Queen Bedroom
w/
Pullout

\$159.00

Queen studio w/
Pullout

11 miles



7745 Elm Creek Blvd N, Maple Grove, MN 55369

Contact: Angie Winkel (651) 269-4669

angie.winkel@tpihospitality.com

[CLICK HERE for WEBSITE](#)

HAMPTON INN - MAPLE GROVE

Where I-94 and I-494 meet, our hotel is a few minutes' walk from retail and dining at the Shoppes at Arbor Lakes. It's a 15-minute drive to Rush Creek Golf Club or to hiking in Elm Creek Park Reserve. Albertville Premium Outlets are up the road 16 miles, and downtown Minneapolis is 25 minutes south. Enjoy daily hot breakfast and WiFi on us.

BREAKFAST INCLUDED IN RATE

RESERVATION DEADLINE - 9/10/25

RATE:

\$169.00

Double Queens

15.6 miles



9980 Wayzata Blvd, St. Louis Park, MN 55426
Contact: Dennis Laufersweiler (952) 367-5082
dlauffer@csmcorp.net
[CLICK HERE FOR WEBSITE](#)

COURTYARD MINNEAPOLIS WEST

Guests can enjoy multiple dining options from quick, convenient offerings at the Bistro, Starbucks, in-room dining, to local pub favorites at our on-site full service restaurant Kip's Irish Pub. The fusion of the adjoined Marriott Minneapolis West allows you to take advantage of extra amenities like a spacious fitness center, indoor pool, valet dry-cleaning services and over 15,500 square feet of full service event space with social distance setup options.

BREAKFAST INCLUDED IN RATE

RESERVATION DEADLINE - 9/10/25

RATE:
\$169.00
 Double Queens
\$159.00
 King w/ Pullout

22.5 miles



9960 Wayzata Blvd, Minneapolis, MN 55426
Contact: Dennis Laufersweiler (952) 367-5082
dlauffer@csmcorp.net
[CLICK HERE FOR WEBSITE](#)

MINNEAPOLIS MARRIOTT WEST

Travel brilliantly with us at the modern Minneapolis Marriott West. Centrally located in St. Louis Park, near Target Field, US Bank Stadium, Mall of America, Ridgedale Shopping Center and downtown Minneapolis and more. Make yourself comfortable in one of our spacious rooms or suites, with pillow-top bedding, free Wi-Fi, and efficient work spaces. We have a huge parking lot and shuttle service. Stay fit in our indoor swimming pool, work out at our fitness center, enjoy a coffee or latte at the on-site Starbucks® or stop by Kip's Irish Pub for a delicious meal or drink.

BREAKFAST INCLUDED IN RATE

RESERVATION DEADLINE - 9/10/25

RATE:
\$169.00
 Double Queens

22.5 miles



11801 Fountains Way N, Maple Grove, MN 55369
Contact: Angie Winkel (651) 269-4669
angie.winkel@tpihospitality.com
[CLICK HERE FOR WEBSITE](#)

HOLIDAY INN - MAPLE GROVE

Our weekend only waterpark hotel is ideally situated in the heart of the Arbor Lakes shopping and entertainment district with easy access to I-94, I-494 and just off I-694, this hotel in Maple Grove MN is a beautiful Venetian-themed hotel that features grand accommodations and a weekend only waterpark that put you close to NW Minneapolis' most exciting attractions and businesses.

BREAKFAST INCLUDED IN RATE

RESERVATION DEADLINE - 9/10/25

RATE:
\$175.00
 Double Queens
\$159.00
 King w/ Pullout

11 miles



2905 Centre Pointe Dr, Roseville, MN 55113

Contact: Angie Winkel (651) 269-4669

angie.winkel@tpihospitality.com

[CLICK HERE FOR WEBSITE](#)

COURTYARD - ROSEVILLE

The Courtyard Roseville hotel was just completely renovated, including all new beds and sofa pullout beds. Conveniently located between downtown Minneapolis and St. Paul. Minutes from Rosedale Mall, TCF Stadium, Target Center, State Fairgrounds, Excel Energy Center, RiverCentre, U of MN, and National Sports Center. Near I-35W, Highway 36 and I-694.

BREAKFAST INCLUDED IN RATE

RESERVATION DEADLINE - 9/10/25

RATE:

\$175.00

Double Queens

\$159.00

King w/ Pullout

11 miles



11871 Fountains Way, Maple Grove, MN 55369

Contact: Angie Winkel (651) 269-4669

angie.winkel@tpihospitality.com

[CLICK HERE FOR WEBSITE](#)

COURTYARD - MAPLE GROVE

The Courtyard by Marriott Maple Grove/Arbor Lakes is located in the premier shopping, dining and entertainment district in the NW suburbs of Minneapolis/St. Paul. Enjoy complimentary high-speed Internet access in all guest rooms and in the lobby, lounge, and restaurant. Dine in The Bistro, which offers healthy choices, a variety of breakfast and dinner options, an evening bar, and specialty beverages with Starbucks coffee. Keep yourself fit while on the road with our oversized fitness center and indoor pool or relax in our year-round outdoor hot tub.

BREAKFAST INCLUDED IN RATE

RESERVATION DEADLINE - 9/10/25

RATE:

\$175.00

Double Queens

\$159.00

King w/ Pullout

16 miles



1050 Gramsie Rd, Shoreview, MN 55126

Contact: Angie Winkel (651) 269-4669

angie.winkel@tpihospitality.com

[CLICK HERE FOR WEBSITE](#)

HILTON GARDEN INN - SHOREVIEW

Find us off I-694, 20 minutes from St. Paul and Minneapolis. We're ideal for Twin Cities attractions: The Science Museum of Minnesota, Minnehaha Regional Park, and Target Field are within 16 miles. Take in some Shoreview scenery at Island Lake Country Park, five minutes away, and enjoy our fitness center and indoor heated pool.

BREAKFAST INCLUDED IN RATE

RESERVATION DEADLINE - 9/10/25

RATE:

\$179.00

Double Queens

\$162.00

King w/ Pullout

11 miles



2715 Long Lake Rd, Roseville, MN 55113

Contact: Theresa Martinez (651) 294-7200

Theresa.MartinezIHG@Outlook.com

[CLICK HERE FOR WEBSITE](#)

HOLIDAY INN EXPRESS - ROSEVILLE

Our Roseville, MN hotel has easy access to Interstate 35W which connects you to the nearby cities of Minneapolis, St. Paul, Arden Hills, and Vadnais Heights. Offering amenities such as free parking, complimentary breakfast, and free wireless high-speed internet. Our free daily breakfast has great options of an egg and meat entrée, frosted cinnamon rolls, yogurt, hot & cold cereal, fruit, milk, and a variety of juices. Guests also like the convenience of a microwave and refrigerator in every guest room.

BREAKFAST INCLUDED IN RATE

RESERVATION DEADLINE - 9/10/25

RATE:

\$179.00

Double Queens &
Kings w / pullout

12 miles