

2024

NAPHL FALL SHOWCASE #2

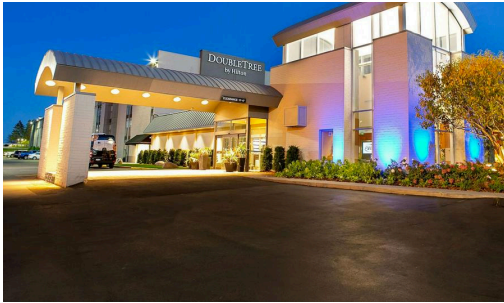


EVENT DATES: SEPTEMBER 26 - 29

SUPER RINK
1850 105TH AVE NE
MINNEAPOLIS, MN 55449

FOGERTY ICE ARENA
9250 LINCOLN ST NE
BLAINE, MN 55434

RESERVATION DEADLINE VARIES BY HOTEL
HOTEL ROOM BLOCK BEGINS 9/25



2540 North Cleveland Avenue, Roseville, MN 55113
Contact: [Samantha Miller](mailto:Samantha.Miller@hilton.com) (651) 367-3906
samantha.miller@hilton.com
[CLICK HERE FOR WEBSITE](#)

DOUBLETREE BY HILTON ROSEVILLE

DoubleTree by Hilton Roseville Minneapolis in Roseville, you'll be in the business district, a 3-minute drive from the Twin Cities. Make yourself at home in rooms featuring refrigerators and flat-screen televisions. Complimentary wired and wireless Internet access keeps you connected, and cable programming provides entertainment. Enjoy American cuisine at Axels Charhouse, a restaurant which features a bar/lounge, or stay in and take advantage of the room service.

BREAKFAST INCLUDED IN RATE
RESERVATION DEADLINE - 9/11/24

NAHL HOST HOTEL

RATE:

\$154.00
Double Queens
and King w/
Pullout

12.2 miles



3045 Centre Pointe Dr, Roseville, MN 55113
Contact: [Katie Smith](mailto:katie.smith@aimbridge.com) (320)492-5980
katie.smith@aimbridge.com
[CLICK HERE for WEBSITE](#)

FAIRFIELD INN & SUITES: ROSEVILLE

Travel comfortably at the Fairfield Inn & Suites Minneapolis St. Paul/Roseville. Our modern hotel in Roseville, MN has everything you need for a seamless experience, including thoughtful amenities and attentive service. Refresh in our hotel rooms and suites with plush Marriott bedding, workspaces, mini-fridges, microwaves, and free Wi-Fi. Whether you're in town for business or pleasure, enjoy your stay at the Fairfield Inn & Suites Minneapolis St. Paul/Roseville.

BREAKFAST INCLUDED IN RATE
RESERVATION DEADLINE - 9/11/24

RATE:

\$135.00
Double Queens

11 miles



3015 Centre Pointe Dr N, Roseville, MN 55113
Contact: [Jacob Gonsior](mailto:Jgonsior@kineth.com) (952) 388-7492
Jgonsior@kineth.com
[CLICK HERE for WEBSITE](#)

AVID HOTEL ROSEVILLE - MINNEAPOLIS NORTH

Welcome to avid Hotel Roseville Minneapolis North. Centrally located between Minneapolis and St. Paul with easy access from 35W & 694. Our hotel is minutes away from the Minnesota Fairgrounds, Como Park & Zoo and the Universities of Northwestern, University of Minnesota, Hamline and Bethel. We are also next to shopping, dining and entertainment at the Roseville Center and AMC Roseville.

BREAKFAST INCLUDED IN RATE
RESERVATION DEADLINE - 9/11/24

RATE:

\$139.00
Double Queens

9.9 miles



COUNTRY INN & SUITES BROOKLYN CENTER

The Country Inn & Suites by Radisson, Brooklyn Center, MN offers you an affordable stay near Brooklyn Park and about 10 miles from the National Sports Center (NSC). The hotel is just half an hour from Minneapolis-St. Paul International Airport (MSP) via I-94. After a busy day, you can head to our indoor pool for a refreshing dip or stop by our fitness center to decompress with a workout. Free Wi-Fi keeps you connected to family as well as your favorite music and shows. Before you hit the road each morning, visit our inviting dining area for a free, hot breakfast featuring our signature waffles. Free Parking available.

RATE:

\$149.00
Double Queens
& King w/ Pullout

11.1 miles

2550 Freeway Blvd, Brooklyn Center, MN 55430
Contact: [Angel Buckhalton \(763\)561-0900](mailto:Angel.Buckhalton@radisson.com)
cisbrooklyncenter@gmail.com
[CLICK HERE for WEBSITE](#)

BREAKFAST INCLUDED IN RATE
RESERVATION DEADLINE - 9/11/24



HOLIDAY INN EXPRESS - ROSEVILLE

Our Roseville, MN hotel has easy access to Interstate 35W which connects you to the nearby cities of Minneapolis, St. Paul, Arden Hills, and Vadnais Heights. Offering amenities such as free parking, complimentary breakfast, and free wireless high-speed internet. Our free daily breakfast has great options of an egg and meat entrée, frosted cinnamon rolls, yogurt, hot & cold cereal, fruit, milk, and a variety of juices. Guests also like the convenience of a microwave and refrigerator in every guest room.

RATE:

\$149.00
Double Queens &
Kings w / pullout

12.1 miles

2715 Long Lake Rd, Roseville, MN 55113
Contact: [Theresa Martinez \(651\) 294-7200 ext. 0](mailto:Theresa.Martinez@hilton.com)
Theresa.MartinezLHG@Outlook.com
[CLICK HERE for WEBSITE](#)

BREAKFAST INCLUDED IN RATE
RESERVATION DEADLINE - 9/11/24



CAMBRIA SUITES DOWNTOWN MINNEAPOLIS

The Cambria Hotel Minneapolis Downtown offers a range of amenities to enhance your stay in the heart of the city. Indulge in locally inspired cuisine and sip a local craft beer, wine, or specialty cocktail at the on-site restaurant and bar. Stay on top of your workout routine with the state-of-the-art fitness center and keep connected with free WiFi available throughout the hotel. Hosting an event? Ask about the meeting space and catering services. Enjoy access to laundry service, a business center, and a range of accessibility amenities for your convenience.

RATE:

\$149.00
Double Queens
& King w/ Pullout

16 miles

1020 Hawthorne Ave, Minneapolis, MN 55403
Contact: [James Schlichting \(563\) 320-6558](mailto:James.Schlichting@hilton.com)
James.Schlichting@Hawkeyehotels.com
[CLICK HERE FOR WEBSITE](#)

BREAKFAST INCLUDED IN RATE
RESERVATION DEADLINE - 9/11/24



FAIRFIELD INN & SUITES DOWNTOWN MINNEAPOLIS

Welcome to the Fairfield Inn & Suites Minneapolis Downtown. Our hotel is conveniently located right off of Highway I-394 in the heart of downtown Minneapolis. For guests looking to catch a sporting event we are within walking distance to both Target Center and Target Field. We are also just a mile away from US Bank Stadium. Looking to catch a concert or musical while in the twin cities? We are close to local venues including First Avenue and the Orpheum Theater.

RATE:
\$149.00
Double Queens
& King w/ pullout

16 miles

BREAKFAST INCLUDED IN RATE
RESERVATION DEADLINE - 9/11/24

1028 Hawthorne Ave, Minneapolis, MN 55403
Contact: [James Schlichting](mailto:James.Schlichting@Hawkeyehotels.com) (563) 320-6558
James.Schlichting@Hawkeyehotels.com
[CLICK HERE FOR WEBSITE](#)



STAYBRIDGE SUITES MAPLE GROVE

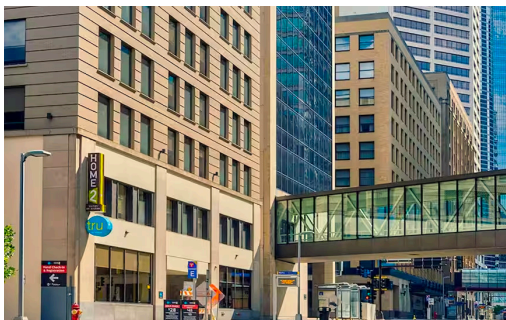
Welcome to Staybridge Suites® Minneapolis - Maple Grove / Arbor Lakes, MN located in a beautiful suburban area northwest of downtown Minneapolis. Located 30 miles from MSP Airport. With nearby walking trails and a scenic courtyard area, as well as a convenient location right in the Arbor Lakes development, the hotel is the perfect home away from home for all travelers.

RATE:
\$149.00
Queen
w/ pullout

16 miles

BREAKFAST INCLUDED IN RATE
RESERVATION DEADLINE - 9/11/24

7821 Elm Creek Blvd N, Maple Grove, MN 55369
Contact: [Angie Winkel](mailto:Angie.Winkel@TpiHospitality.com) (651) 269-4669
Angie.Winkel@TpiHospitality.com
[CLICK HERE FOR WEBSITE](#)



TRU BY HILTON MINNEAPOLIS DOWNTOWN

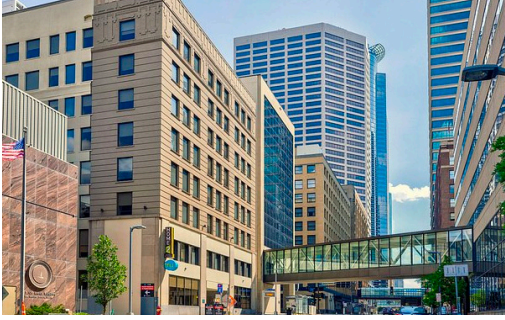
A bank building reimaged, our hotel is connected to the Skyway System (opening hours may vary) and is just three blocks from Nicollet Mall and riverfront parks. Vikings and Twins games are within a mile. Along with free breakfast and a 24/7 market, we offer games in the lobby and a fitness center.

RATE:
\$149.00
Double Queens &
Kings w / pullout

18 miles

BREAKFAST INCLUDED IN RATE
RESERVATION DEADLINE - 9/11/24

317 2nd Ave S, Minneapolis, MN 55401
Contact: [James Schlichting](mailto:James.Schlichting@Hawkeyehotels.com) (563) 320-6558
James.Schlichting@Hawkeyehotels.com
[CLICK HERE FOR WEBSITE](#)



HOME2 SUITES BY HILTON MINNEAPOLIS DOWNTOWN

A former bank building, our all-suite hotel connects to the Skyway System (opening hours may vary). We are three blocks from Nicollet Mall and riverfront parks. First Avenue concerts and Twins and Vikings games are all within a mile. Join us for free breakfast or cook meals in your in-suite kitchen with full-size appliances.

RATE:
\$149.00
King w/ Pullout

BREAKFAST INCLUDED IN RATE
RESERVATION DEADLINE - 9/11/24

18 miles

317 2nd Ave S, Minneapolis, MN 55401
Contact: [James Schlichting](mailto:James.Schlichting@Hawkeyehotels.com) (563) 320-6558
James.Schlichting@Hawkeyehotels.com
[CLICK HERE for WEBSITE](#)



DOUBLETREE BY HILTON MINNEAPOLIS-PARK PLACE

Premier West End Location! Ideally located five miles west of downtown Minneapolis in the trendy "West End" area of St. Louis Park. We are steps away from 25+ dining and entertainment options and offer complimentary parking. Enjoy our saltwater pool, fitness center and on-site Dover restaurant. Stop by the front desk for your warm DoubleTree Cookie!

RATE:
\$149.00
Double Queens

BREAKFAST INCLUDED IN RATE
RESERVATION DEADLINE - 9/11/24

19 miles

1500 Park Place Blvd, Minneapolis, MN 55416
Contact: [Megan O'Connor](mailto:Megan.O'Connor@Hilton.com) (952) 542-8600
Megan.O'Connor@Hilton.com
[Kim Thompson](mailto:Kim.Thompson@Hilton.com) (952) 542-8600
Kim.Thompson@Hilton.com
[CLICK HERE FOR WEBSITE](#)



SHERATON MINNEAPOLIS WEST

Discover modern comfort at Sheraton Minneapolis West Hotel. Our Minnetonka hotel is a short drive from downtown Minneapolis, MN, MSP Airport and Lake Minnetonka. Enter our lovely grand atrium and feel right at home as our staff warmly welcomes you. Relax in our spacious and comfortable guestrooms and suites, featuring a Sheraton Sleep Experience Bed, high-speed Wi-Fi and a refrigerator. Enjoy breakfast at Atrium Bistro or stop by The Reserve Lounge for dinner or cocktails overlooking Crane Lake Wildlife Reserve. Swim in our heated indoor pool and stay fit in our 24/7 Sheraton Fitness Center.

RATE:
\$149.00
Doubles

24 miles

12201 Ridgedale Dr, Minnetonka, MN 55305
Contact: [Benjamin Wiebusch](mailto:Benjamin.Wiebusch@SheratonMinneapolisWest.com) (952) 960-3536
BenjaminWiebusch@SheratonMinneapolisWest.com
[CLICK HERE FOR WEBSITE](#)

BREAKFAST INCLUDED IN RATE
RESERVATION DEADLINE - 9/11/24



FAIRFIELD INN & SUITES, MPLS - NORTH

Conveniently located just under 8 miles from the heart of Minneapolis just off highway 694. With many appealing complimentary amenities, including a well-stocked breakfast buffet, high speed Wi-Fi ensuring productivity while you are with us, and an open-air parking lot, you can stay comfortably without all the bustle of downtown. Don't miss a beat from your routine at home, with an up to date fitness center, and a pool to relax in.

RATE:
\$154.00
Double Queens &
King w/ pullout

11 miles

6250 Earle Brown Dr, Brooklyn Center, MN 55430
Contact: [Nicole French](mailto:Nicole.French@empirehotelsgroup.com) (763) 561-8000
nfrench@empirehotelsgroup.com
[CLICK HERE](#) for WEBSITE

BREAKFAST INCLUDED IN RATE
RESERVATION DEADLINE - 9/11/24



COUNTRY INN & SUITES

Situated less than 20 minutes outside of the Twin Cities, we provide business and leisure travelers with a peaceful suburban retreat. After a day of travel along I-35, drop off your bags in one of our hotel rooms and treat yourself to a dip in our indoor pool. If you'd prefer to take in some fresh air, you can grab a book from your bag and enjoy some quiet time on our outdoor patio with a firepit. Come morning, kick-start your day with a satisfying meal at our free, hot breakfast featuring our signature waffles. You can return later for a warm cup of coffee or a cookie in our lobby. We also offer a well-equipped fitness center and a 24-hour business center.

RATE:
\$154.00
Double Queens
and King w/
Pullout

12.7 miles

2740 E Snelling Ave N, Roseville, MN 55113
Contact: [Jeremy Briggs](mailto:Jeremy.Briggs@sandcompanies.com) (651) 492-6456
JDBriggs@sandcompanies.com
[CLICK HERE](#) for WEBSITE

BREAKFAST INCLUDED IN RATE
RESERVATION DEADLINE - 9/4/24



MINNEAPOLIS MARRIOTT NORTHWEST

Recharge in spacious hotel rooms and suites with plush bedding, productive workspaces, and Concierge Lounge access in select accommodations. Enjoy American dining and cocktails at Wadsworth, our onsite restaurant, or explore Brooklyn Park restaurants near our hotel like Granite City Food & Brewery, P.F. Chang's, and Pittsburgh Blue. Maintain your active lifestyle at our refreshing indoor pool and 24/7 fitness center.

RATE:
\$154.00
Double Queens
and King w/
Pullout

15.3 miles

7025 Northland Dr N, Brooklyn Park, MN 55428
Contact: [Cody Rogala](mailto:Cody.Rogala@minneapolismarriottnw.com) (763) 536-3331
cody.rogala@minneapolismarriottnw.com
[CLICK HERE](#) for WEBSITE

BREAKFAST INCLUDED IN RATE
RESERVATION DEADLINE - 9/11/24



EMBASSY SUITES MINNEAPOLIS NORTH

Our suites are adjacent to the Earle Brown Heritage Center and two miles from Brooklyn Center. We're 15 minutes from downtown Minneapolis hotspots such as Target Center and Guthrie Theatre, and the Mall of America is 23 minutes away. Enjoy our free made-to-order breakfast and complimentary evening reception.

RATE:
\$154.00
Double Queens &
King w/ Pullout

BREAKFAST INCLUDED IN RATE
RESERVATION DEADLINE - 9/11/24

16 miles

6300 Earle Brown Dr., Brooklyn Center, MN 55430
Contact: [Cassandra Casale](mailto:Cassandra.Casale@Hilton.com) (763)367-3793
Cassandra.Casale@Hilton.com
[CLICK HERE for WEBSITE](#)



HILTON GARDEN INN - MAPLE GROVE

We're right off I-494, 15 miles north west of central Minneapolis, and a short drive to The Shoppes at Arbor Lakes, with a wide variety of shops and restaurants in the area. The National Sports Center is a 25-minute drive away in Blaine. Perks include free WiFi and an indoor pool. The Garden Grille & Bar serves breakfast and dinner.

RATE:
\$154.00
Double Queens &
King w/ Pullout

BREAKFAST INCLUDED IN RATE
RESERVATION DEADLINE - 9/11/24

19 miles

6350 Vinewood Ln N, Maple Grove, MN 55311
Contact: [Bernie Kelcher](mailto:bkelcher@ncg-hotels.com) 651-428-6139
bkelcher@ncg-hotels.com
[CLICK HERE for WEBSITE](#)



HILTON GARDEN INN - SHOREVIEW

Find us off I-694, 20 minutes from St. Paul and Minneapolis. We're ideal for Twin Cities attractions: The Science Museum of Minnesota, Minnehaha Regional Park, and Target Field are within 16 miles. Take in some Shoreview scenery at Island Lake Country Park, five minutes away, and enjoy our fitness center and indoor heated pool.

RATE:
\$155.00
Double Queens
\$145.00
King w/ Pullout

BREAKFAST INCLUDED IN RATE
RESERVATION DEADLINE - 9/11/24

11 miles

1050 Gramsie Rd, Shoreview, MN 55126
Contact: [Angie Winkel](mailto:angie.winkel@tpihospitality.com) (651) 269-4669
angie.winkel@tpihospitality.com
[CLICK HERE for WEBSITE](#)



2905 Centre Pointe Dr, Roseville, MN 55113
 Contact: [Angie Winkel](mailto:Angie.Winkel@tphospitality.com) (651) 269-4669
angie.winkel@tphospitality.com
[CLICK HERE for WEBSITE](#)

COURTYARD - ROSEVILLE

The Courtyard Roseville hotel was just completely renovated, including all new beds and sofa pullout beds. Conveniently located between downtown Minneapolis and St. Paul. Minutes from Rosedale Mall, TCF Stadium, Target Center, State Fairgrounds, Excel Energy Center, RiverCentre, U of MN, and National Sports Center. Near I-35W, Highway 36 and I-694.

BREAKFAST INCLUDED IN RATE
RESERVATION DEADLINE - 9/11/24

RATE:
 \$155.00
 Double Queens
 \$145.00
 King w/ Pullout

11 miles



2985 Centre Pointe Dr, Roseville, MN 55113
 Contact: [Angie Winkel](mailto:Angie.Winkel@tphospitality.com) (651) 269-4669
angie.winkel@tphospitality.com
[CLICK HERE for WEBSITE](#)

RESIDENCE INN BY MARRIOTT - ROSEVILLE

Experience comfort in a modern setting with our newly renovated Residence Inn Minneapolis St. Paul/Roseville. Perfectly positioned with easy access to downtown Minneapolis, St. Paul and major interstates I-35W and I-694. The Residence Inn by Marriott Roseville is an extended stay hotel, featuring spacious suites with fully equipped kitchen, separate living and sleeping areas, and free high-speed internet. The hotels newly renovated fitness facilities include an exercise room, indoor pool and whirlpool, outdoor sport court and 2 mile paved walking path.

BREAKFAST INCLUDED IN RATE
RESERVATION DEADLINE - 9/11/24

RATE:
 \$155.00
 Queen Bedroom
 w/
 Pullout
 \$149.00
 Queen studio w/
 Pullout

11 miles



2020 Iona Ln, Roseville, MN 55113
 Contact: [Angie Winkel](mailto:Angie.Winkel@tphospitality.com) (651) 269-4669
angie.winkel@tphospitality.com
[CLICK HERE for WEBSITE](#)

HOME 2 SUITES - ROSEVILLE

Roseville dining and shops are on your doorstep, with Minneapolis and St. Paul both a 15-minute drive away. Budding scientists will be near the Science Museum of Minnesota and the Como Park Zoo & Conservatory. Business guests will be close to Boston Scientific offices. WiFi and breakfast are on us, or rustle something up in your in-suite kitchen.

BREAKFAST INCLUDED IN RATE
RESERVATION DEADLINE - 9/11/24

RATE:
 \$155.00
 Queen w/ Sofa
 Pullout

11.7 miles



11657 Arbor Lakes Parkway N, Maple Grove, MN
 Contact: Angie Winkler (651) 269-4669
angie.winkler@tpihospitality.com
[CLICK HERE for WEBSITE](#)

SPRINGHILL SUITES - MAPLE GROVE

Experience the new SpringHill Suites Minneapolis Maple Grove/Arbor Lakes located in the heart of Arbor Lakes, a collection of independent stores, specialty chains and national brands, plus a variety of restaurants and entertainment. Enjoy our free breakfast buffet with a selection of eggs, sausage or bacon, cereals, fruit and Greek yogurt. Each 55-inch flat screen TV has the ability to stream Netflix and Hulu. The large, 24-hour fitness center is equipped with free weights and cardio equipment and our indoor pool and outdoor patio with firepit.

RATE:
\$155.00
 King w/ Trundle

15 miles

BREAKFAST INCLUDED IN RATE
RESERVATION DEADLINE - 9/11/24



11871 Fountains Way, Maple Grove, MN 55369
 Contact: Angie Winkler (651) 269-4669
angie.winkler@tpihospitality.com
[CLICK HERE for WEBSITE](#)

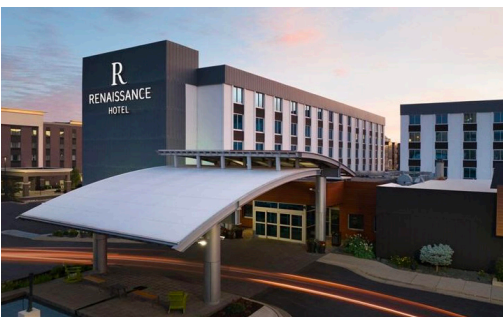
COURTYARD - MAPLE GROVE

The Courtyard by Marriott Maple Grove/Arbor Lakes is located in the premier shopping, dining and entertainment district in the NW suburbs of Minneapolis/St. Paul. Enjoy complimentary high-speed Internet access in all guest rooms and in the lobby, lounge, and restaurant. Dine in The Bistro, which offers healthy choices, a variety of breakfast and dinner options, an evening bar, and specialty beverages with Starbucks coffee. Keep yourself fit while on the road with our oversized fitness center and indoor pool or relax in our year-round outdoor hot tub.

RATE:
\$155.00
 Double Queens
\$145.00
 King w/ Pullout

16 miles

BREAKFAST INCLUDED IN RATE
RESERVATION DEADLINE - 9/11/24



5500 American BLVD W, Bloomington, MN 55457
 Contact: Melanie Larson 952-345-1244
mealanie.larson@rhbloomington.com
[CLICK HERE for WEBSITE](#)

RENAISSANCE MINNEAPOLIS - BLOOMINGTON

Our hip, recently refreshed hotel is a short drive from the Minneapolis-Saint Paul International Airport, as well as the Mall of America, US Bank Stadium and light rail. Work out in our 24-hour fitness center or heated Junior Olympic-sized pool. Foodies appreciate our on-site restaurant LARS, which serves modern cuisine with a playful Minnesota twist. Our hotel restaurant is now open for guests to dine in for breakfast and dinner. At the end of the day, relax in an upscale hotel room that has been refreshed for extra comfort.

RATE:
\$155.00
 Double Queens &
 King w/ Pullout

27 miles

BREAKFAST INCLUDED FOR 4 PEOPLE PER ROOM
RESERVATION DEADLINE - 9/11/24



HOMEWOOD SUITES NEW BRIGHTON

We're 20 minutes north of Minneapolis and St. Paul, and moments from Blaine, Shoreview and Roseville. From our location near I-35, the National Sports Center, Land O'Lakes, and Medtronic are easy to reach. Finish the day at our free evening social every Wednesday. or with a meal in your in-suite kitchen. WiFi and breakfast are on us.

RATE:
\$159.00
King W/ Pullout

7 miles

1815 Old Hwy 8 NW, New Brighton, MN 55112
Contact: Angie Winkel (651) 269-4669
angie.winkel@tpihospitality.com
[CLICK HERE for WEBSITE](#)

BREAKFAST INCLUDED IN RATE
RESERVATION DEADLINE - 9/11/24



HAMPTON INN - ROSEVILLE

Located off I-35W, we're seven miles from downtown Minneapolis, and 12 miles from St. Paul. Shop and dine at the Rosedale Center, two miles away. The University of Minnesota and University of Northwestern-St. Paul are within 10 minutes of the hotel, and the airport is 25 minutes' drive. Relax with our indoor pool, free hot breakfast, and free WiFi.

RATE:
\$159.00
Double Queens

10.5 miles

2050 Iona Ln West, Roseville, MN 55113
Contact: Angie Winkel 651-269-4669
angie.winkel@tpihospitality.com
[CLICK HERE for WEBSITE](#)

BREAKFAST INCLUDED IN RATE
RESERVATION DEADLINE - 9/11/24



HOLIDAY INN - MAPLE GROVE

Our weekend only waterpark hotel is ideally situated in the heart of the Arbor Lakes shopping and entertainment district with easy access to I-94, I-494 and just off I-694, this hotel in Maple Grove MN is a beautiful Venetian-themed hotel that features grand accommodations and a weekend only waterpark that put you close to NW Minneapolis' most exciting attractions and businesses.

RATE:
\$159.00
Double Queens
\$149.00
King w/ Pullout

11 miles

11801 Fountains Way N, Maple Grove, MN 55369
Contact: Angie Winkel (651) 269-4669
angie.winkel@tpihospitality.com
[CLICK HERE for WEBSITE](#)

BREAKFAST INCLUDED IN RATE
RESERVATION DEADLINE - 9/11/24



HAMPTON INN - MAPLE GROVE

Where I-94 and I-494 meet, our hotel is a few minutes' walk from retail and dining at the Shoppes at Arbor Lakes. It's a 15-minute drive to Rush Creek Golf Club or to hiking in Elm Creek Park Reserve. Albertville Premium Outlets are up the road 16 miles, and downtown Minneapolis is 25 minutes south. Enjoy daily hot breakfast and WiFi on us.

RATE:
\$159.00
Double Queens

15.6 miles

7745 Elm Creek Blvd N, Maple Grove, MN 55369
Contact: [Angie Winkel](mailto:Angie.Winkel@tpihospitality.com) (651) 269-4669
angie.winkel@tpihospitality.com
[CLICK HERE for WEBSITE](#)

BREAKFAST INCLUDED IN RATE
RESERVATION DEADLINE - 9/11/24



SPRINGHILL SUITES BY MARRIOTT MINNEAPOLIS WEST/ST. LOUIS PARK

Our St. Louis Park hotel offers everything you need to travel in style. Recharge in our modern suites with Marriott bedding, workspaces, and sofa beds. Savor free breakfast served every morning and enjoy dining at nearby restaurants like TGI Fridays, Yard House, and The Loop. Stay active at our heated indoor pool and 24-hour fitness center or head to Theodore Wirth Golf Club nearby for outdoor recreation. Explore the local area with a visit to the Theater District and top attractions like Target Field, U.S. Bank Stadium, and The Shops at West End. We're also close to medical facilities like Methodist Hospital, Park Nicollet, and Abbott Northwestern. Our free parking and convenient location near Pentair, General Mills, and Wells Fargo make our event venues a great choice for your next meeting. No matter how long you're in town, enjoy it at SpringHill Suites St. Louis Park.

RATE:
\$164.00
Double Queens
\$154.00
King w/ Pullout

20 miles

5901 Wayzata Blvd, St Louis Park, MN 55416
Contact: [Liz Siegrist](mailto:Liz.Siegrist@aimbridge.com) 952-367-2710
liz.siegrist@aimbridge.com
[CLICK HERE for WEBSITE](#)

BREAKFAST INCLUDED IN RATE
RESERVATION DEADLINE - 9/11/24



COURTYARD MINNEAPOLIS WEST

Guests can enjoy multiple dining options from quick, convenient offerings at the Bistro, Starbucks, in-room dining, to local pub favorites at our on-site full service restaurant Kip's Irish Pub. The fusion of the adjoined Marriott Minneapolis West allows you to take advantage of extra amenities like a spacious fitness center, indoor pool, valet dry-cleaning services and over 15,500 square feet of full service event space with social distance setup options.

RATE:
\$164.00
Double Queens
\$144.00
Single King

22.5 miles

9980 Wayzata Blvd, St. Louis Park, MN 55426
Contact: [Dennis Laufersweiler](mailto:Dennis.Laufersweiler@csml.com) 952-367-5082
dlauffer@csml.com
[CLICK HERE for WEBSITE](#)

BREAKFAST INCLUDED IN RATE
RESERVATION DEADLINE - 9/11/24



9960 Wayzata Blvd, Minneapolis, MN 55426
 Contact: Dennis Laufersweiler (952)367-5082
dlauffer@csmcorp.net
[CLICK HERE for WEBSITE](#)

MINNEAPOLIS MARRIOTT WEST

Travel brilliantly with us at the modern Minneapolis Marriott West. Centrally located in St. Louis Park, near Target Field, US Bank Stadium, Mall of America, Ridgedale Shopping Center and downtown Minneapolis and more. Make yourself comfortable in one of our spacious rooms or suites, with pillow-top bedding, free Wi-Fi, and efficient work spaces. We have a huge parking lot and shuttle service. Stay fit in our indoor swimming pool, work out at our fitness center, enjoy a coffee or latte at the on-site Starbucks® or stop by Kip's Irish Pub for a delicious meal or drink.

RATE:
 \$164.00
 Double Queens
 \$144.00
 Single King

22.5 miles

BREAKFAST INCLUDED IN RATE
RESERVATION DEADLINE - 9/11/24



2808 University Ave SE, Minneapolis, MN 55414
 Contact: Abigail Julian (612) 400-1673
Abigail.Julian@Hilton.com
[CLICK HERE FOR WEBSITE](#)

HOME2 SUITES MINNEAPOLIS UNIVERSITY AVE AREA

Located in Prospect Park, we are just down the road from the University of Minnesota and situated halfway between Minneapolis and St. Paul. Just one block from a light rail stop, all Minnesota sporting events and concerts are within minutes of the hotel! Our seasonal rooftop bar offers great views of the city, and our heated indoor pool and hot tub are great for a relaxing swim or soak after a long day.

RATE:
 \$169.00
 Double Queens &
 King w/ Pullout
 17 miles

BREAKFAST INCLUDED IN RATE
\$20 PARKING PER NIGHT
RESERVATION DEADLINE - 9/11/24



411 Minnesota St, St Paul, MN 55101
 Contact: Sheila Lukonen (651) 605-6972
Sheila.lukonen@hilton.com
[CLICK HERE FOR WEBSITE](#)

DOUBLETREE BY HILTON ST. PAUL DOWNTOWN

Elevate Your Stay! Conveniently situated in the heart of Downtown Saint Paul, Minnesota, our hotel is ideally located close to attractions and interesting dining options. Take advantage of our hotel amenities, including a fitness center, indoor heated pool and two hotel restaurants, including our sports themed Rival House Restaurant. Rival House offers a relaxed, contemporary twist on casual dining with amazing oven-fired pizzas and classic American fare. We look forward to welcoming you with our famous DoubleTree cookie upon arrival.

RATE:
 \$169.00
 Double Queens
 19 miles

BREAKFAST INCLUDED IN RATE
BUS PARKING NOT INCLUDED
RESERVATION DEADLINE - 9/11/24